

European Grapevine Moth

(*Lobesia botrana*)

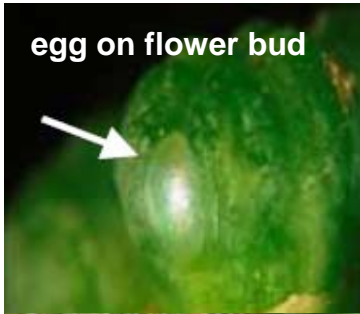


Photo by Andrea Lucchi



A Tradition of Stewardship
A Commitment to Service

Photographic Identification Aid



egg on flower bud



1st instar larva



2nd instar larva



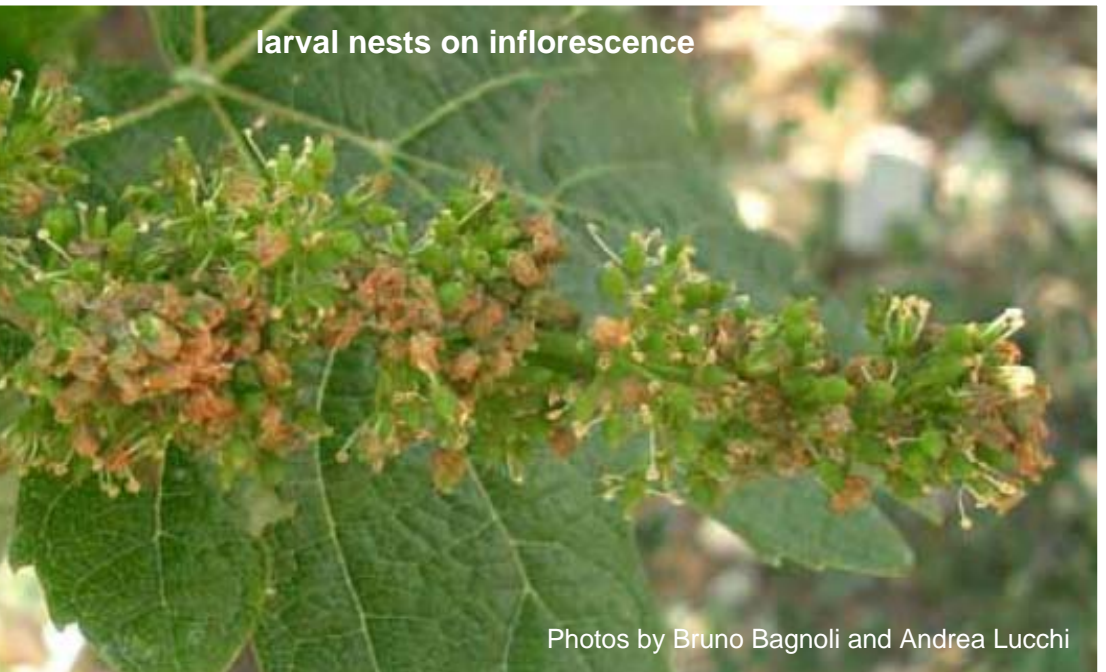
4th instar larva



5th instar larva



egg on flower bract



larval nests on inflorescence

Photos by Bruno Bagnoli and Andrea Lucchi

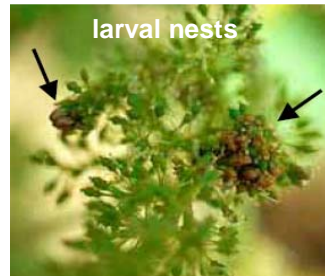


larva and damage

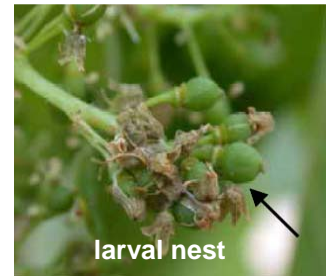
Photo by Monica Cooper



larval nest



larval nests



larval nest



pupae overwintering under bark

If you find this insect, call
The Napa County Agricultural
Commissioner's Office at
(707) 253-4357