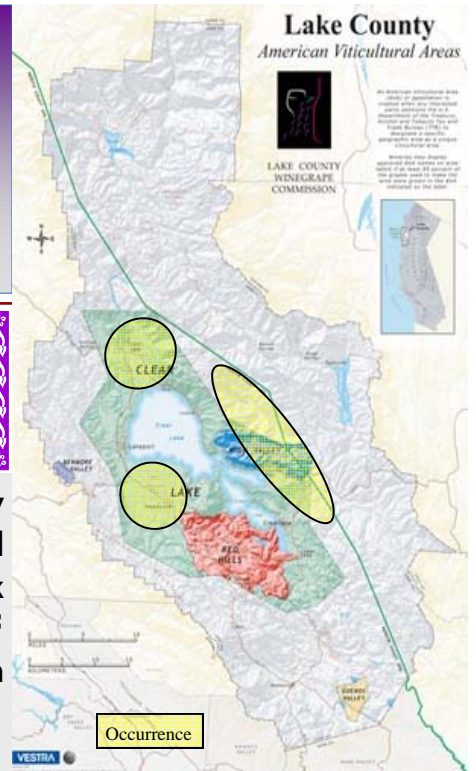




Lake County, California Soils

Talmage



“...may it be that the land chooses the crop, not otherwise.”
- anonymous

Talmage soils are very deep, somewhat excessively drained soils formed in mixed alluvium under annual grasses and scattered oak cover. They are soils of poor fertility found on gently sloping floodplains.



Talmage Profile*:

- 0 - 1 ft: black very gravelly loamy sand
- 1 - 2 ft: brown very gravelly sandy loam
- 2 - 2.5 ft: brown extremely gravelly sand
- > 2.5 ft: gravels, sand, and cobble

* this profile is a variation of Talmage



Fitness for Use in Vineyards:

- **Nutrient Cycling:** Organic amendments and cover crops improve nutrient supply and tilth. Nutrient applications should ensure delivery to the root zone.
- **Water Relations:** A deeper root distribution would be expected, but roots may tend to concentrate in upper 2' of the profile. The onset of plant water deficits will be rapid in this droughty, coarse-textured soil, requiring close monitoring.
- **Management Considerations:** Rapid drying and a wider flux in soil temperatures will accelerate root pruning, organic matter decomposition, and turnover.

Talmage-like soils, Cache Creek Vineyards, near Clear Lake Oaks, California. The scale is in feet.

Soil Climate and Geography:

Mean annual precipitation: 25 to 50 inches
Frost-free days: 150 to 200 days
Elevation Range: 1,300' to 1,800'
Slope Range: from 0 to 8%
Slope Direction: no dominant slope direction



Talmage Soil Properties of Interest:

Available water-holding capacity: less than 3 inches (0-5 ft)
Drainage class: somewhat excessively drained
Permeability class: moderately rapid - rapid permeability
Clay range in profile: 16 - 1%, large decrease below 20"
Sand range in profile: 45 - 90%, generally more with depth
Coarse fragment range: 40 - 95%, increasing with depth
Soil pH range: pH 7.4 in upper part, pH 7 in lower part