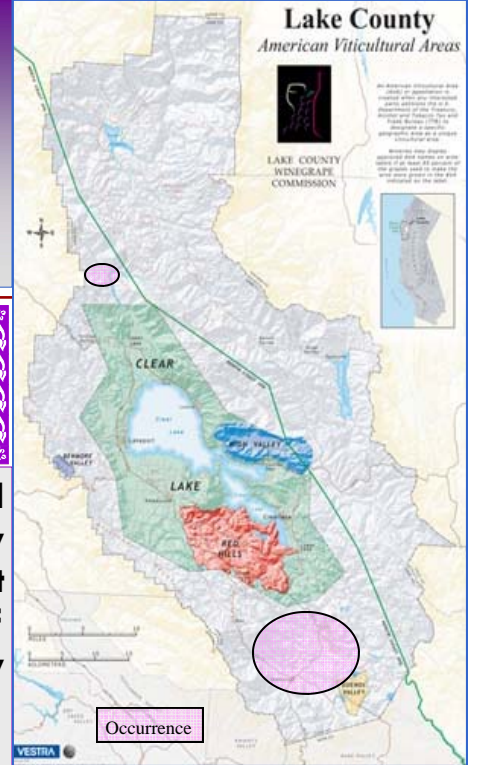




Lake County, California Soils

Jafa



"...may it be that the land chooses the crop, not otherwise."
- anonymous

Jafa soils are very deep soils formed from alluvial sediments under a mixed conifer-hardwood forest. They are mature, somewhat slowly permeable soils of moderate native fertility found on sloping terraces.



Jafa Soil Profile:

- 0 - 1 ft: dark brown gravelly loam
- 1 - 2.5 ft: dark reddish brown gravelly loam
- 2.5 - 4.5 ft: yellowish red gravelly clay loam
- > 4.5 ft: yellowish red very gravelly clay loam



Fitness for Use in Vineyards:

- **Nutrient Cycling:** these soils respond well to fertilization. Organic amendments or cover crops can increase nutrient supply and tilth. Avoid acid fertilizers. Monitoring of acid-sensitive nutrients such as phosphorus and calcium is helpful.
- **Water Relations:** Uniformity of clay and gravel through profile assures good root distribution to 4.5 feet; roots limited by mature soil development below.
- **Management Considerations:** susceptible to compaction, soil erosion on sloped ground, and soil rutting when moist.

Viognier grapes growing on Jafa soils, Rosenthal Vineyards, Middletown, California. The scale is in feet.

Soil Climate and Geography:

Mean annual precipitation: 30 to 45 inches
Frost-free days: 150 to 190 days
Elevation Range: 800' to 2,200'
Slope Range: typically 2 to 15%
Slope Direction: typically north to east-facing



Jafa Soil Properties of Interest:

Available water-holding capacity: about 8 inches (0-4.5 ft)
Drainage class: well-drained
Permeability class: moderately slow permeability

Clay range in profile: 23 - 28%, increasing with depth
Sand range in profile: 40 - 30%, decreasing with depth
Coarse fragment range: 20 to 35%, increasing with depth

Soil pH range: pH 6.3 in upper part, pH 5.7 in lower part